

Guidance for collecting MRO screening specimens

- Hospital Transfer/Admission MRO screening: **one MRO eSwab set** (Nose, Throat, Perianal)
- ICU admission or discharge screening: **one MRO 3 eSwab set** (Nose, Throat, Perianal)
- Clearance screening (MRSA, VRE or CPE/CPO/MRAB): **two swab sets** as per the table below

MRO eSwab Set



Bacterial eSwab for M/C/S



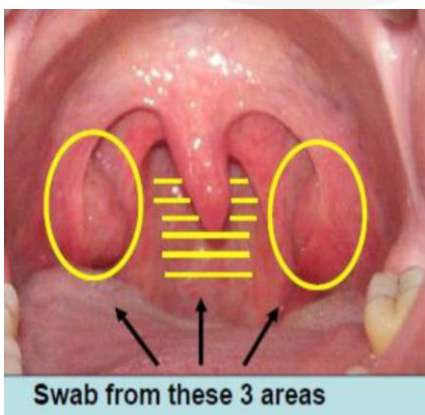
Admission / Transfer / Cohort / ICU Screening (1 set)

Organism	Specimens Required
MRO Screen: MRSA, VRE, CPE MRAB, CPO	<ul style="list-style-type: none"> • Nose (pink swab) • Throat (pink swab) • Perianal (White swab) } Pink MRO eSwab kit <ul style="list-style-type: none"> • Any open wound or percutaneous device exit site - Blue bacterial eSwab • Urine for patients with intermittent or continuous catheterisation - yellow jar

MRO Clearance Screening (2 sets) – submit each set with separate request and bag

Organism	Specimens required
MRSA	<ul style="list-style-type: none"> • Nose (pink swab) • Throat (pink swab) • Perianal (White swab) } Pink MRO eSwab kit <ul style="list-style-type: none"> • Any open wound or percutaneous device exit site - Blue bacterial eSwab
VRE	<ul style="list-style-type: none"> • Perianal swab preferably soiled with faeces - Pink MRO eSwab kit • Urine for patients with intermittent or continuous catheterisation - yellow jar
MRGN (CPE/CPO) <i>[only on request of Infection Prevention]</i>	<ul style="list-style-type: none"> • Faeces preferred OR rectal AND inguinal swabs - Pink MRO eSwab kit • Urine for patients with intermittent or continuous catheterisation - yellow jar • Any open wound or percutaneous device exit site - Blue bacterial eSwab • ET aspirate if intubated or tracheostomy present - Blue bacterial eSwab

Collecting throat swab specimens



1. Perform hand hygiene and don PPE
2. Affix patient identification label to e-swab container and specify collection site, date and time on pathology request form.
3. Collect using one dry pink swab for all three throat areas.
4. Unscrew and remove pink cap from tube, insert pink swab to base and stir for 5 seconds.
5. Lift pink swab from liquid and gently press against inner side to release any remaining liquid.
6. Remove and discard pink swab in waste
7. Repeat steps 3-7 for second site (i.e. nose)
8. Discard PPE, discard waste and perform HH
9. Submit to pathology as per local procedure.

MRO = Multi-resistant organism
CPE = Carbapenemase-Producing Enterobacteriaceae

Guidance for collecting screening specimens

Collecting open wound specimens



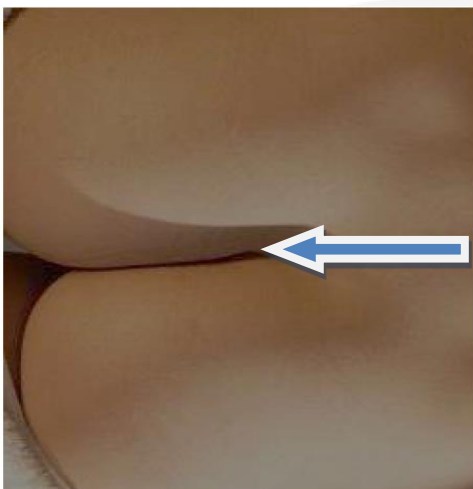
1. Affix patient identification label to e-swab container and specify collection site, date and time on pathology request form.
2. Perform hand hygiene and don PPE, as per standard precautions
3. Sample base of wound with swab.
4. Place swab in transport medium , break at mark and close top place in sample bag with request form
5. Discard PPE, discard waste and perform HH
6. Submit to pathology as per local procedure.

Collecting nasal specimens



1. Affix patient identification label to e-swab container and specify collection site, date and time on pathology request form.
2. Perform hand hygiene and don PPE, as per standard precautions
3. Use one swab for both nostrils.
4. Unscrew and remove pink cap from tube, insert pink swab to base and stir for 5 seconds.
5. Lift pink swab from liquid and gently press against inner side to release any remaining liquid.
6. Remove and discard pink swab in waste.
7. Repeat steps 3-7 for second site (i.e. throat)
8. Discard PPE, discard waste and perform HH
9. Submit to pathology as per local procedure.

Collecting perianal specimens



Swab in the direction of the arrow

1. Affix patient identification label to e-swab container and specify collection site, date and time on pathology request form.
2. Perform hand hygiene as per 5 moments and don PPE, as per standard precautions.
3. With the patient supine sample across the intergluteal cleft with the swab- ensure contact with the anal margins by parting the buttocks with the other hand. For either MRSA or VRE screening, the perianal swab should be soiled by faeces ideally or the swab can be dipped in fresh faeces.
4. Discard waste, remove PPE and perform hand hygiene as per 5 Moments of hand hygiene.

MRO = Multi-resistant organism

CPE = Carbapenemase-Producing Enterobacteriaceae